

SIGNATURE FEATURES

ELENORE ON FIFTH FEATURES AN EXCLUSIVE COLLECTION OF 20 SIGNATURE SUITES. ALL COME STANDARD WITH AN IMPRESSIVE ARRAY OF ENVIABLE UPGRADES.

- Generous private stepped terrace, balcony or rooftop terrace with gas hook-ups, electrical outlets and water hose bib (as per plan).
- Secured, below-grade parking spot(s) in preferred location(s) with individual metered electric car charger.
- Penthouse parking stall(s) back onto private storage rooms all over 115 square feet.
- Motorized roller blinds on all exterior windows, including blackout blinds in bedrooms.
- Individual programmable thermostats in living areas and bedrooms allow for balanced heating and cooling year round.
- Solid quartz, square profile waterfall countertops wrap kitchen islands.
- Generously sized bathroom vanities with single or double sink and square profile quartz countertops (as per plan).
- Kitchen appliance package includes:
 - 30" **Wolf** gas stainless steel cooktop.
 - 30" **Wolf** built-in wall oven in stainless steel.

- 30" **Sub-Zero** counter depth refrigerator with integrated cabinet overlay.
- Double **Fisher & Paykel** dishwasher drawers with integrated cabinet overlay.
- Slim line fully-integrated range hood.
- Signature kitchen appliances include:
 - 30" **Wolf** speed oven.
 - 24" **Sub-Zero** under counter wine fridge.



The Developer reserves the right to make modifications and changes to the information contained herein. Photos and map are representational and are not accurate. Prices, dimensions, sizes, specifications, layouts and materials are approximate only and subject to change without notice. E.&O.E.



SIGNATURE SUITE
PENTHOUSE 3



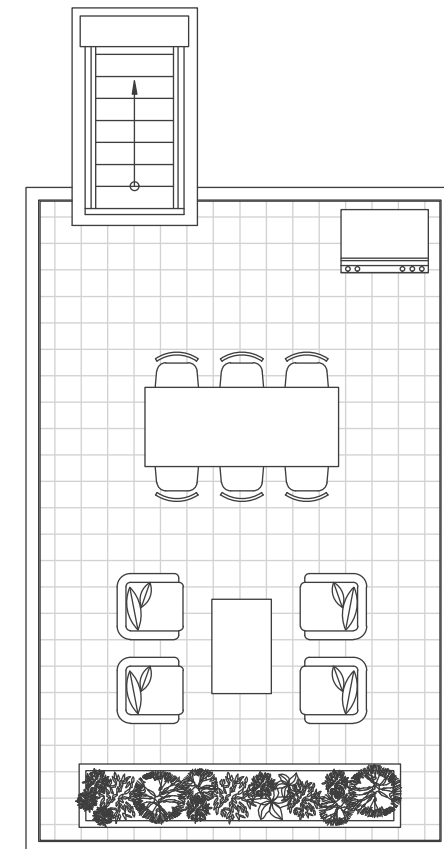
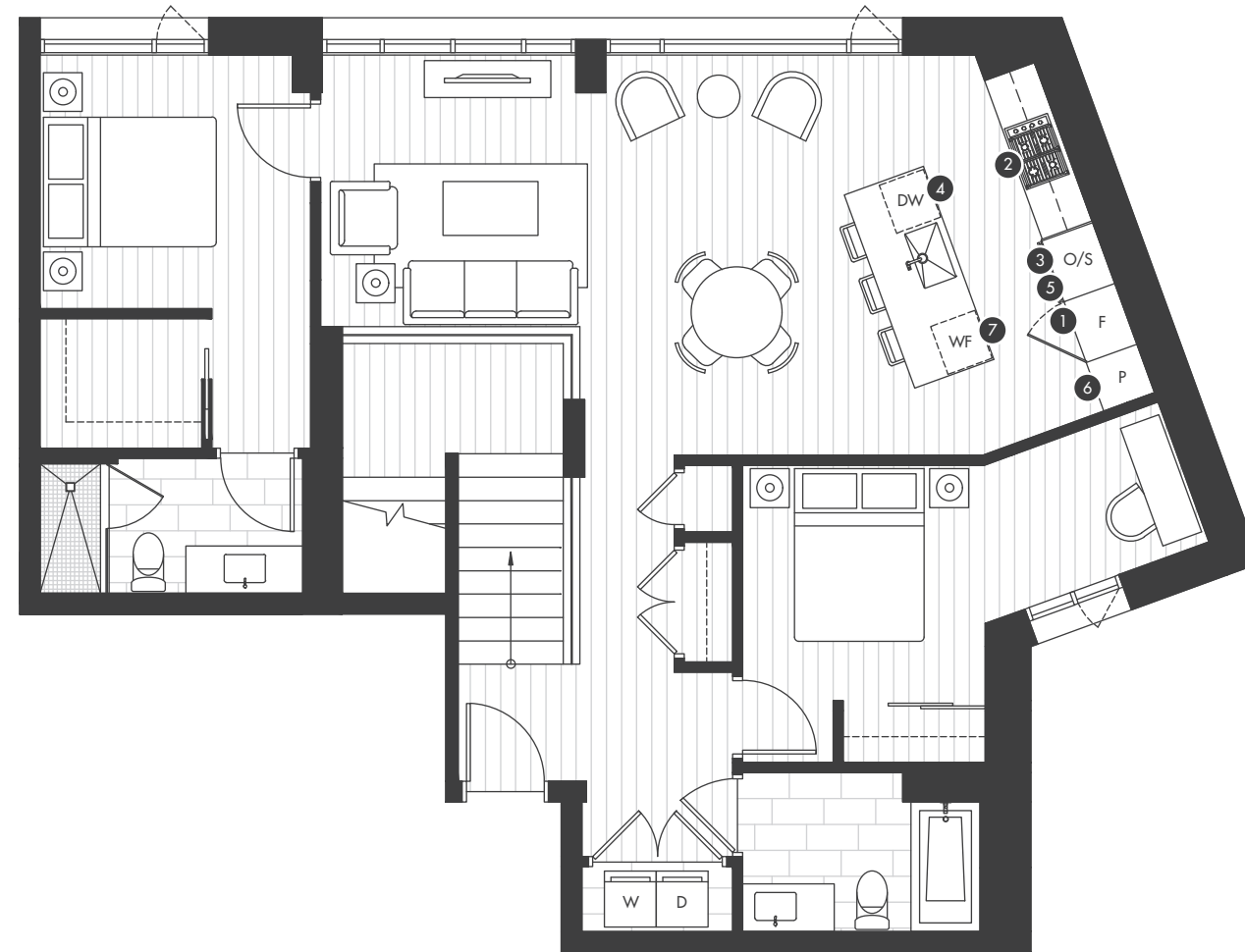
ELENORE ON FIFTH

SIGNATURE SUITE

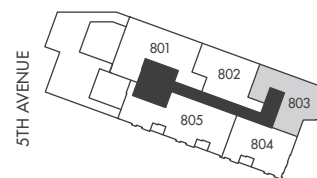
2 BED PENTHOUSE 3

INDOOR SPACE
1085 SQ FT

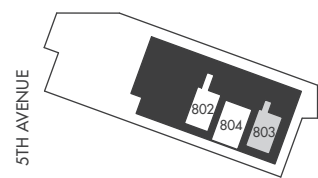
OUTDOOR SPACE
362 SQ FT



- ① 30" Sub-Zero counter depth refrigerator with integrated cabinet overlay.
- ② 30" Wolf gas stainless steel cooktop.
- ③ 30" Wolf built-in wall oven in stainless steel.
- ④ Double Fisher & Paykel dishwasher drawers with integrated cabinet overlay.
- ⑤ 30" Wolf speed oven.
- ⑥ Integrated pantry with full-extension pull out drawers.
- ⑦ 24" Sub-Zero under counter wine fridge.



MAIN STREET
LEVEL 8



MAIN STREET
LEVEL 8



The Developer reserves the right to make modifications and changes to the information contained herein. Photos and map are representational and are not accurate. Prices, dimensions, sizes, specifications, layouts and materials are approximate only and subject to change without notice. E.&O.E.

